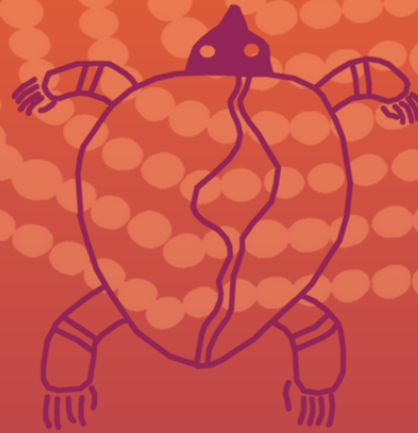


Why Communify?

Communify is a place-based community services organisation with over 40 years of experience in listening and responding to the needs and interests of our community members.

Communify is committed to being an inclusive organisation. We recognise that we work across diverse communities and welcome and encourage participants from all backgrounds and experiences.

We aim to support clients on their journey by helping you to identify your strengths and recognising your cultural needs. We strive to promote these values and to ensure cultural awareness is embedded in our practice as a part of our reconciliation journey.



Supporting our community on all sides

Communify QLD Ltd
967 Brunswick St, New Farm QLD 4005
P (07) 3510 2789
E BinkenbaPlace@communify.org.au
W Communify.org.au

Supported Housing for Older Women



Binkenba Gunya

Gaba Baa Yana –y-
(Good Life Journey)

About the service

Bikenba Place is a transitional supported housing facility designed to support First Nations women over 45 and women over 50 into secure long-term housing.

The service operates through a culturally-informed lens to empower women, guided by First Nations cultural goals of community by connection, care and respect to help connect women with a sustainable “gunya” home.

Bikenba Place offers short-term self-contained units, with furnished or unfurnished options available. We acknowledge that everyone has individual needs for housing, which is why our team provides onsite support to service users.

Rent is calculated based on 25 percent of income, and associated support services are included in this amount.

How we can help

The Bikenba Place program provides individualised supports guided by a recovery-focused model to help women identify their own long-term goals around health and wellbeing. We aim to create a sense of belonging for women, by working alongside them in their healing journey.

Available supports include:

- Long-term housing
- Financial supports
- In-home capacity building supports – cleaning and tenancy management.
- Employment and training pathways
- Alcohol and Other Drugs support
- NDIS readiness
- Referrals to physical health supports
- Spiritual wellbeing
- Access to community groups, such as Yarning Up, Creative Spirits, Capacity Building, Life Skills and more, that are focused on healing and recovery

Eligibility Criteria

This service is tailored for:

- First Nations women over 45
- Women over the age of 50
- At risk or experiencing homelessness.
- Hold an approved Department of Housing Application.

How to refer

If you would like to discuss a referral, you can contact our team during business hours on Monday to Friday on **3510 2789**.

You can also email **BikenbaPlace@communify.org.au** for more information.

We encourage and prioritise referrals from people who are Aboriginal or Torres Strait Islander and/or identify as LGBTIQ+.